



**BELLEVUE
CHRISTIAN**
SCHOOL



HIGH SCHOOL PROFILE

2024 - 2025

OUR MISSION SINCE 1950

Preparing young people to live faithfully and fully for God in a rapidly changing world with the ability to understand, evaluate, and transform their world from the foundation of God's unchanging values.

Head of School

Eric Rasmussen

Principal

Adam Hart

Provost

Stephanie Windemuth

Counselors

Kristofor Musser

Diana Hafzalla

Danielle Lopez

Director of Athletics

Mark DeJonge

Director of Student Learning

Jayna Harris

Contact Admissions:

admissions@bellevuechristian.org

425-460-3300

Get in Touch:

info@bellevuechristian.org

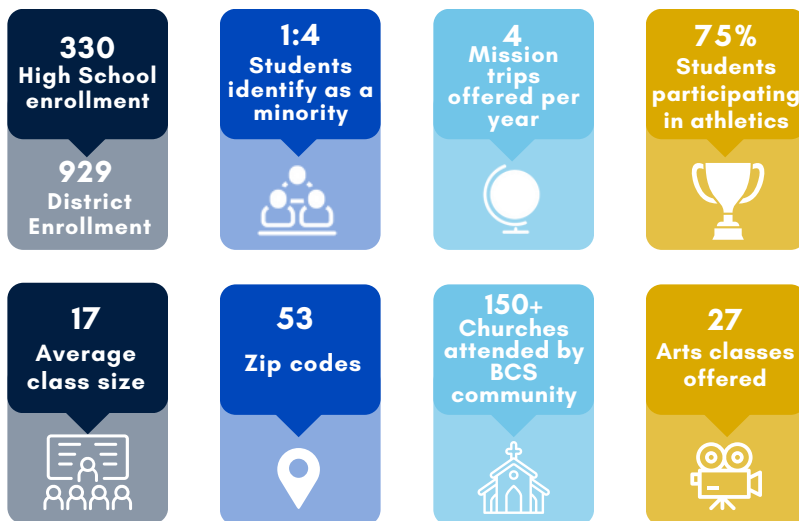
SCHOLARSHIP, RELATIONSHIP, DISCIPLESHIP

At Bellevue Christian School, students experience a well-rounded Christian education, engaging in academic learning and spiritual growth through discipleship. We believe that intellectual achievement is best balanced with deepening faith and strengthening character—within a community where each person is loved and valued.

FAITH-FILLED LEARNING

The framework for integrating faith at BCS is called Teaching for Transformation (TfT). TfT is rooted in a transformational Christian worldview that invites students to discover and actively participate in God's story. TfT practices connect our academic learning with our Christian faith.

SCHOOL AND COMMUNITY





14 AP COURSES OFFERED

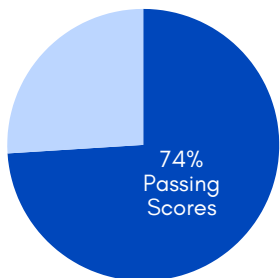
- AP Biology
- AP calculus AB
- AP calculus BCS
- AP Computer Science "A"
- AP Computer Science "Principles"
- AP English Composition
- AP Physics I
- AP Physics II
- AP Seminar
- AP Spanish Language
- AP Statistics
- AP Studio Art
- AP US History
- AP World History.

*Accelerated math programs are offered in Junior High

241 AP tests taken in the 2023-2024 school year

AP TESTING

74% AP exams with passing scores



AP SCHOLAR SUMMARY

2023-24	# of Scholars	Avg Score
AP Scholar	28	3.28
With Honor	6	3.56
With Distinction	11	4.23
International Diploma	1	3.40

PLATINUM STATUS
TOP 6% OF ELIGIBLE SCHOOLS



MARKING PROCEDURES

GPA's are calculated on a four-point (4.0), unweighted scale. Class rank is not calculated due to small class size.

<u>GPA</u>	<u>Percent</u>	<u>Grade</u>
4.0	100-93	A
3.7	92.99-90	A-
3.3	89.99-87	B+
3.0	86.99-83	B
2.7	82.99-80	B-
2.3	79.99-77	C+
2.0	76.99-73	C
1.7	72.99-70	C-
1.3	69.99-67	D+
1.0	66.99-63	D
0.7	62.99-60	D-
	Below 60	E



CREDIT REQUIREMENTS

4	ENGLISH
3.5	SOCIAL STUDIES
3	MATHEMATICS
3	SCIENCE
2	PHYSICAL EDUCATION
2	BIBLE
2	WORLD LANGUAGE
2	ARTS
2	ELECTIVES

STANDARDIZED TESTING

SAT Summary- 2022-2024	
SECTION	AVERAGE
Evidence Based Reading & Writing	619
Math	616
Total: 1237	
ACT Summary- 2022-2024	
SECTION	AVERAGE
English	25
Math	23
Reading	23
Science	25
Composite	25

TEACHER QUALITY

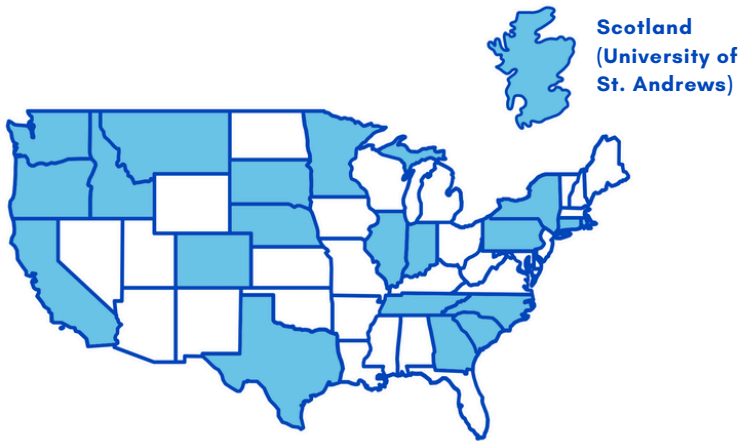
75% of high school teachers hold Master's Degrees and 3 teachers have doctorates.

CONCURRENT CREDIT

52 concurrent college credits offered through partnerships with George Fox University, Northwest University and Northwest Nazarene University.

ARTS	THEATRE	3 major productions and competes with the International Thespian Society (ITS)
	MUSIC	3 bands, 3 choirs; including jazz band, drumline and the BCS worship team.
	VISUAL MEDIA	Courses for Engineering, Design, Video Production, Photography, Digital art and Studio Art.
ATHLETICS	FALL	Girls Soccer, Volleyball (JV and Varsity), Cross Country, Football, Cheer.
	WINTER	Boy's Basketball (JV and Varsity), Girls Basketball (JV and Varsity), Cheer.
	SPRING	Baseball, Softball, Boy's Golf, Girl's Golf, Boy's Soccer (JV and Varsity), Track & Field.

College Attendance: Three Year History



Abilene Christian University
Arizona State University-Tempe
University of Arizona
Azusa Pacific University
Baylor University
Bellevue College
Belmont University
Big Bend Community College
Biola University
Boise State University
Boston University
Bryn Mawr College
Cal Poly
California Baptist University
University of California, Berkeley
University of California-Davis
University of California-Irvine
University of California-San Diego
Calvin University
Central Washington University
Chapman University
University of Colorado Boulder
Colorado State University-Fort Collins
Creighton University
Elon University
Emory University
Endicott College
Fordham University
George Fox University
Gonzaga University
Grand Canyon University-Traditional Campus
University of Illinois at Urbana-Champaign
Lewis & Clark College
Michigan State University
University of Minnesota-Twin Cities
Montana State University
The University of Montana
New York University
Northwest Nazarene University
Northwest University
Oregon State University
Otis College of Art and Design
Pacific Lutheran University

CLASS OF 2024

- 67 Class of 2024 graduates
- 94% 4-year college bound
- 37 different colleges attended

GPA	% of Students
4.0	6%
3.75-3.99	38%
3.50-3.74	23%
3.25-3.49	16%
3.00-3.24	12.5%
2.99- below	11%

Out of 63 students

Pacific University
Pepperdine University
Point Loma Nazarene University
University of Portland
University of Puget Sound
Purdue University-Main Campus
Saint Martin's University
University of San Diego
San Jose State University
Santa Clara University
Savannah College of Art & Design - SCAD
Seattle Pacific University
Seattle University
South Dakota School of Mines and Technology
Southern Adventist University
University of Southern California
Southern Methodist University
Texas Christian University
The Master's University and Seminary
University of Oregon
University of St Andrews
Vanguard University of Southern California
Washington State University
University of Washington-Seattle Campus
University of Washington-Bothell Campus
Western Washington University
Westmont College
Wheaton College
Worcester Polytechnic Institute

ACCREDITATIONS



THE WASHINGTON STATE
BOARD OF EDUCATION